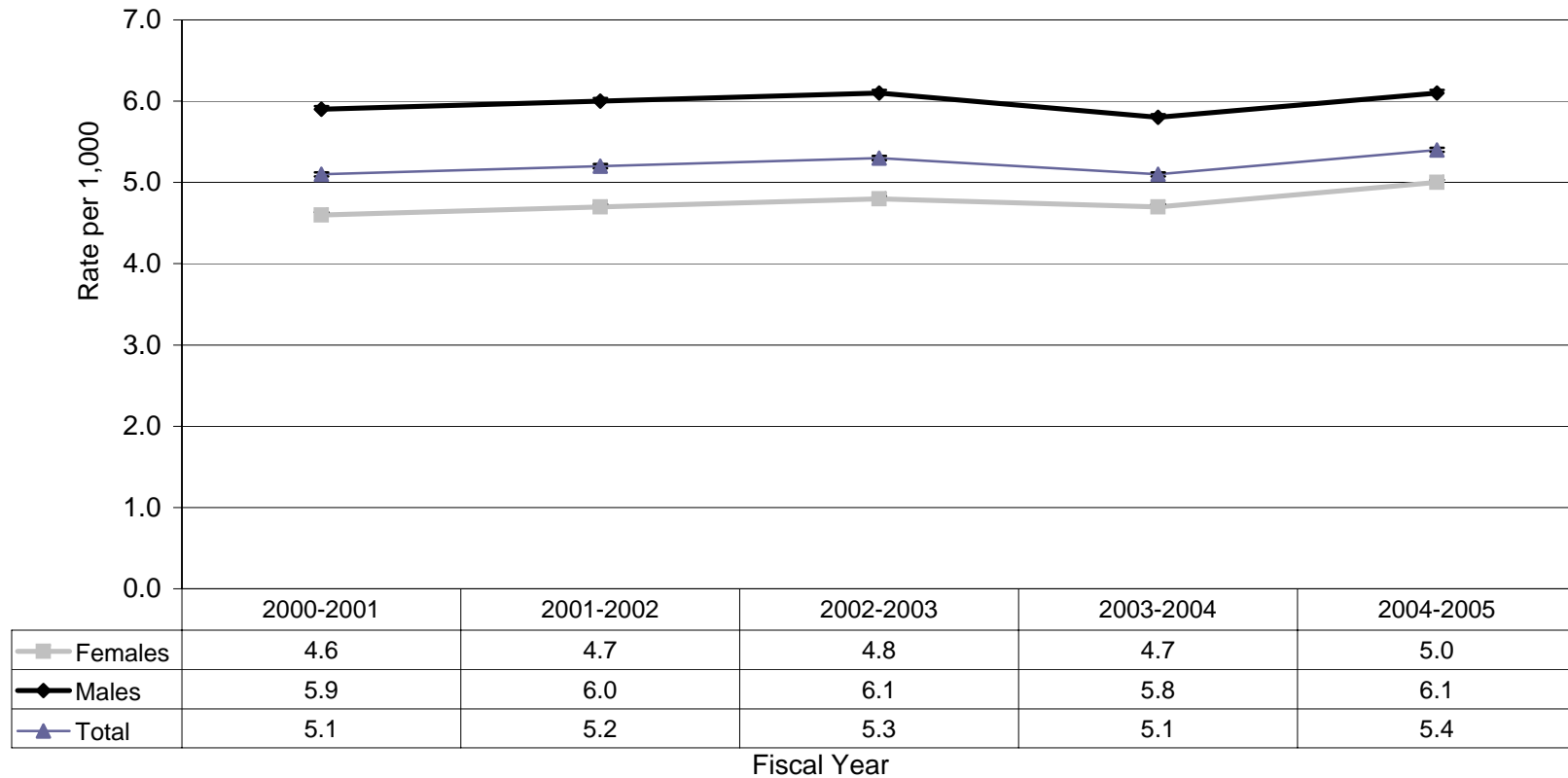


**Figure 5. Age-Standardized Incidence Rates* of Diagnosed Diabetes
Among People Aged 1 Year and Older, Canada, 2000-2001 to 2004-2005**



Source: Public Health Agency of Canada, using NDSS data files contributed by all provinces and territories, as of October 31, 2007
*Age-standardized to 1991 Canadian population

‡The 95% Confidence Interval shows an estimated range of values which is likely to include the true incidence rate 19 times out of 20.