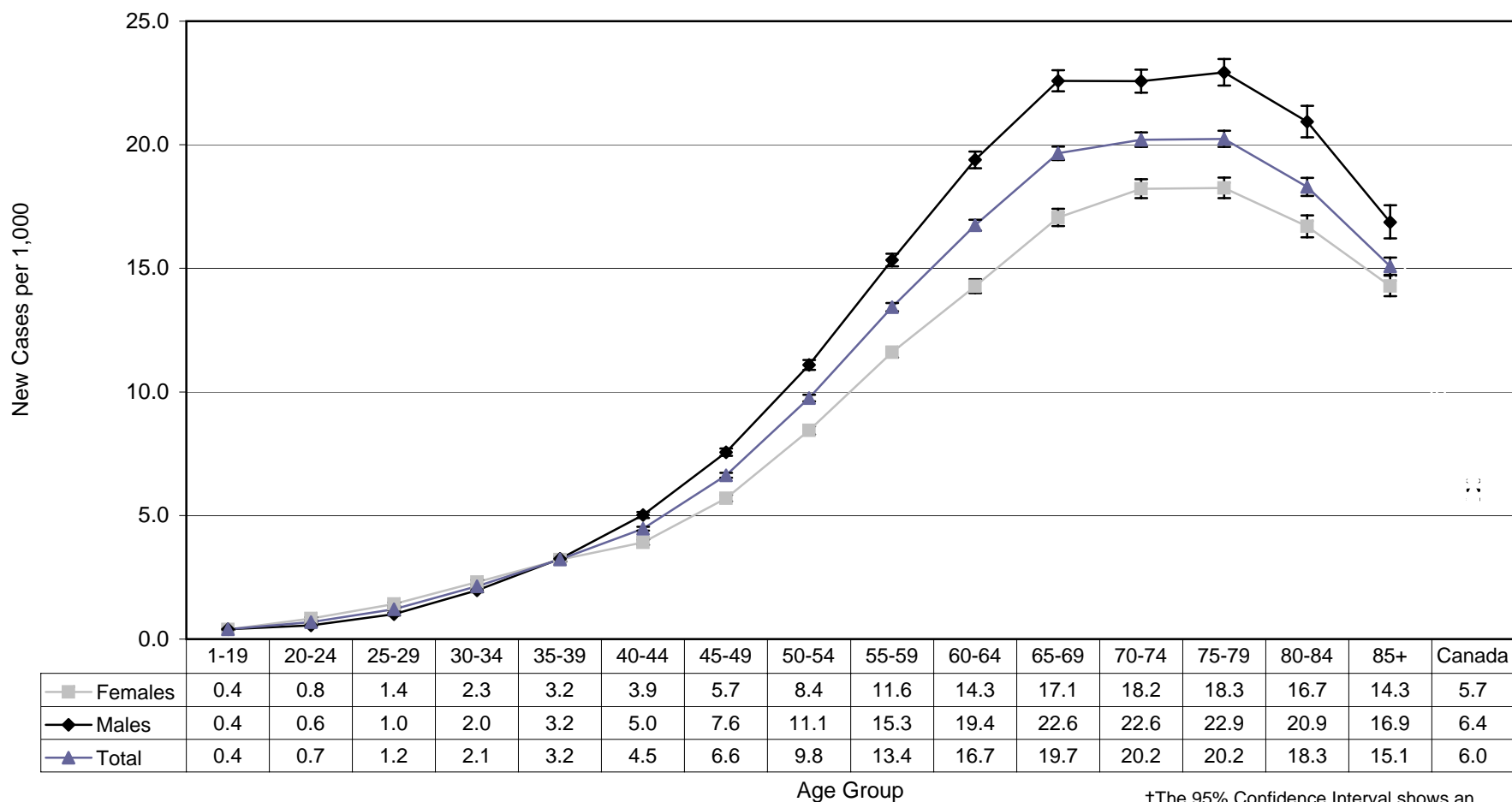


Figure 4. Incidence Rates of Newly Diagnosed Diabetes Among People Aged 1 Year and Older, by Age Group, Canada, 2004-2005



Source: Public Health Agency of Canada, using NDSS data files contributed by all provinces and territories, as of October 31, 2007

‡The 95% Confidence Interval shows an estimated range of values which is likely to include the true incidence rate 19 times out of 20.