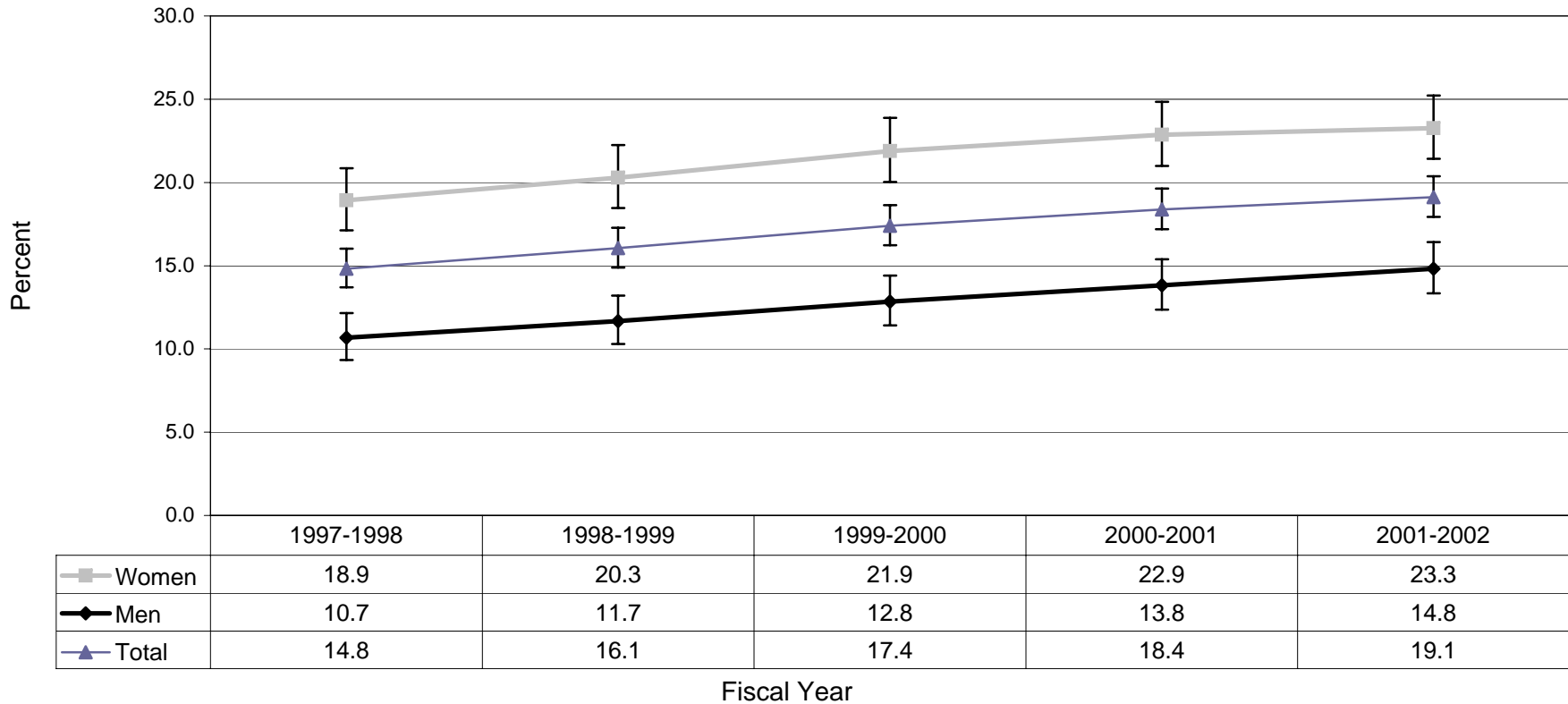


Figure 14. Age-Standardized Prevalence Rates* of Diagnosed Diabetes Among Adults Aged 20 and Older, James Bay Cree, Quebec, 1997-1998 to 2001-2002



Source: Cree Diabetes Information System, as of October 31, 2007

*Age-standardized to 1991 Canadian Population

‡The 95% Confidence Interval shows an estimated range of values which is likely to include the true prevalence rate 19 times out of 20.