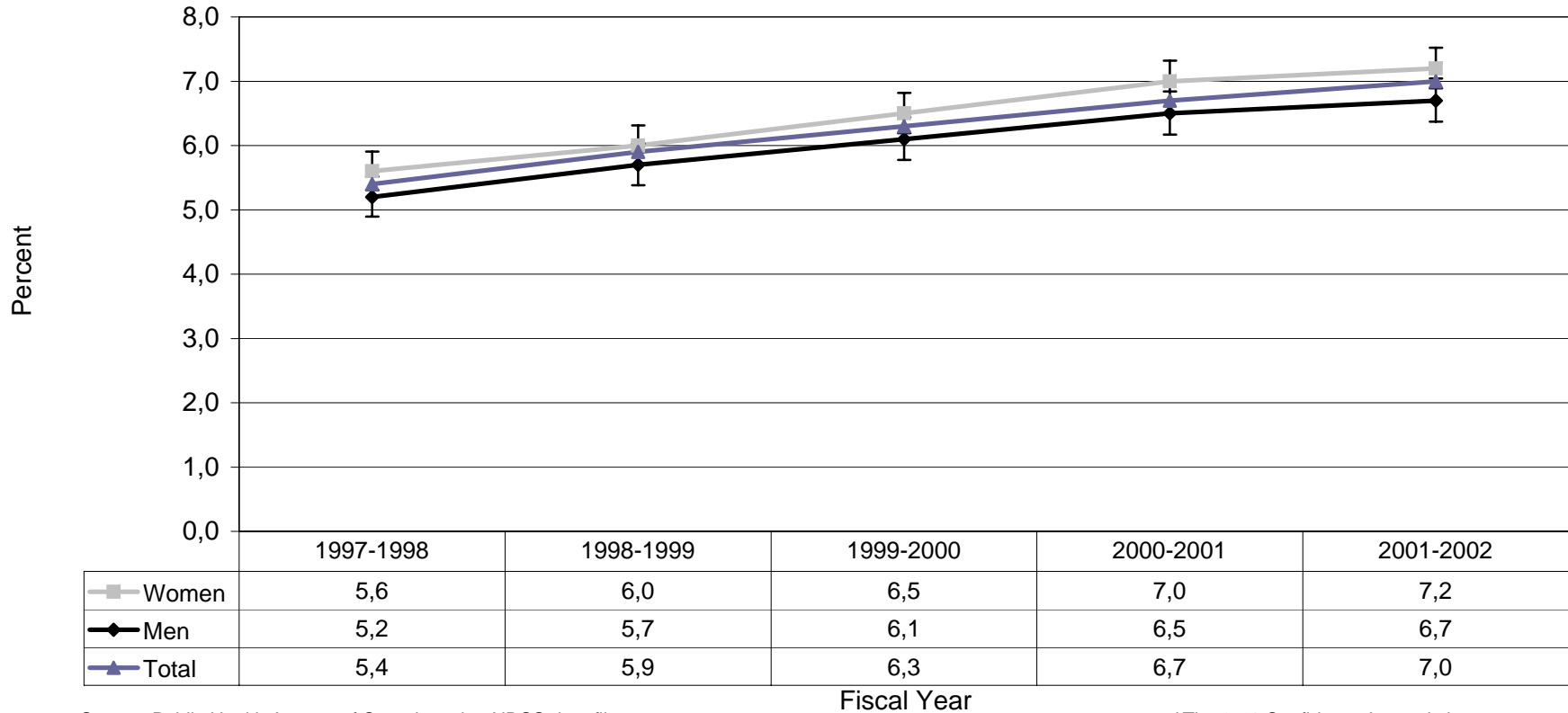


**Figure 10. Age-Standardized Prevalence Rates* of Diagnosed Diabetes
Among Adults Aged 20 and Older, BC First Nations Residents,
British Columbia, 1997-1998 to 2001-2002**



Source: Public Health Agency of Canada, using NDSS data files contributed by British Columbia, as of October 31, 2007

*Age-standardized to 1991 Canadian population

‡The 95% Confidence Interval shows an estimated range of values which is likely to include the true prevalence rate 19 times out of 20.